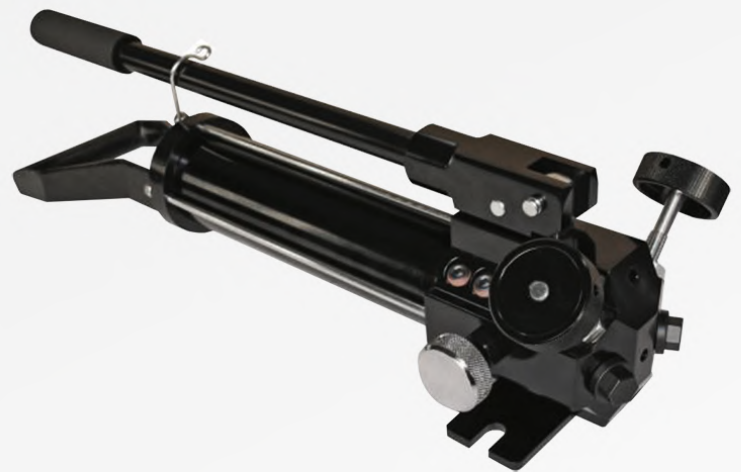


# BP350B - BP550B - BP1000B - BP350BG

## Hydraulic Twin Port Sealed Pump

### Description

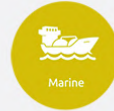
The Hydraulic Twin-Port Hand-Pump range is tailored for use with hydraulic equipment. Its output is regulated to 700 bar (10,000 psi) and is delivered from the twin threaded 3/8" NPT output ports. The pumps can be used with any 700 bar (10,000 psi) rated hydraulic equipment within their oil capacity specification. For example, BP350B can be used with 1 or 2 off 10 Ton, 2" Stroke Cylinders for lifting at the same time. The diaphragm oil-reservoir design means that, unlike conventional units, the hand-pumps are operable at all angles and are highly resistant to accidental spillage of hydraulic fluid. For further details please request or download an instruction manual.



### Maximum Pressure Rating

- ✓ 1st Stage: 13.8 bar
- ✓ 2nd Stage: 700 bar

### Designed for different industries



	Stage	BP350B	BP550B	BP1000B
Pump Type		TWO SPEED	TWO SPEED	TWO SPEED
Pressure Rating	1st	13.8 bar (197 psi)	13.8 bar (197 psi)	13.8 bar (197 psi)
	2nd	700 bar (10,000 psi)	700 bar (10,000 psi)	700 bar (10,000 psi)
Nominal Oil Capacity		350 cc (21.4 in <sup>3</sup> )	550 cc (33.6 in <sup>3</sup> )	1000 cc (61.0 in <sup>3</sup> )
Usable Oil Capacity		350 cc (21.4 in <sup>3</sup> )	550 cc (33.6 in <sup>3</sup> )	1000 cc (61.0 in <sup>3</sup> )
Oil Volume Per Stroke	1st	3.62 cc (0.221 in <sup>3</sup> )	3.62 cc (0.221 in <sup>3</sup> )	3.62 cc (0.221 in <sup>3</sup> )
	2nd	0.77 cc (0.047 in <sup>3</sup> )	0.77 cc (0.047 in <sup>3</sup> )	0.77 cc (0.047 in <sup>3</sup> )
Max Handle Effort		33 kgf (72.75 lbf)	25 kgf (55.12 lbf)	21 kgf (46.30 lbf)
Piston Stroke		18 mm (0.71")	18 mm (0.71")	18 mm (0.71")

SCAN ME



Tel: +65 6271 0800  
 Fax: +65 6273 3121  
[enquiries@petracarbon.com](mailto:enquiries@petracarbon.com)  
[www.petracarbon.com](http://www.petracarbon.com)



# BP350B - BP550B - BP1000B - BP350BG

Hydraulic Twin Port Sealed Pump

## Kit Components

### BP350B

- ✓ 1 x BP350B Pump Unit
- ✓ 1 x Instruction Manual
- ✓ 1 x Carton Packaging
- ✓ **Packaging Dimensions:**  
450 x 230 x 190 mm

### BP550B

- ✓ 1 x BP550B Pump Unit
- ✓ 1 x Instruction Manual
- ✓ 1 x Carton Packaging
- ✓ **Packaging Dimensions:**  
740 x 190 x 200 mm

### BP1000B

- ✓ 1 x BP1000B Pump Unit
- ✓ 1 x Instruction Manual
- ✓ 1 x Carton Packaging
- ✓ **Packaging Dimensions:**  
820 x 160 x 180 mm

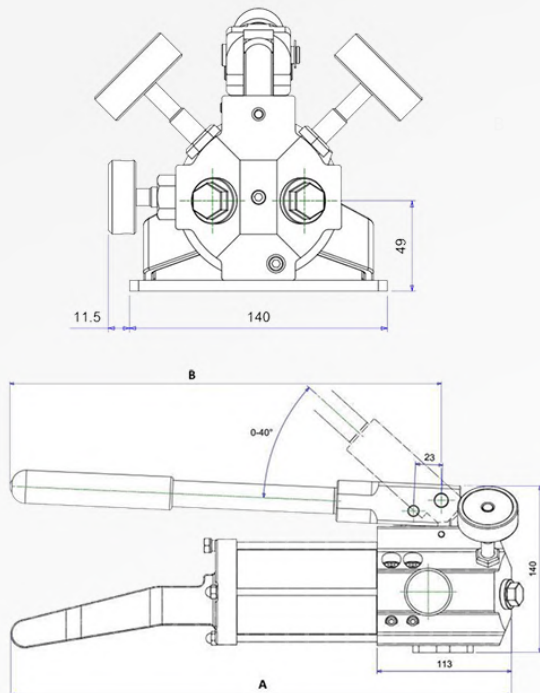
### BP350BG

- ✓ 1 x BP350BG Pump Unit
- ✓ 2 x 0-1,000 bar Gauge
- ✓ 2 x 3/8" Port Gauge Adaptor
- ✓ 2 x Hydraulic hose; 1.8 m length  
700 bar with two couplers
- ✓ 1 x Instruction Manual
- ✓ 1 x Molding Case
- ✓ **Packaging Dimensions:**  
580 x 230 x 180 mm

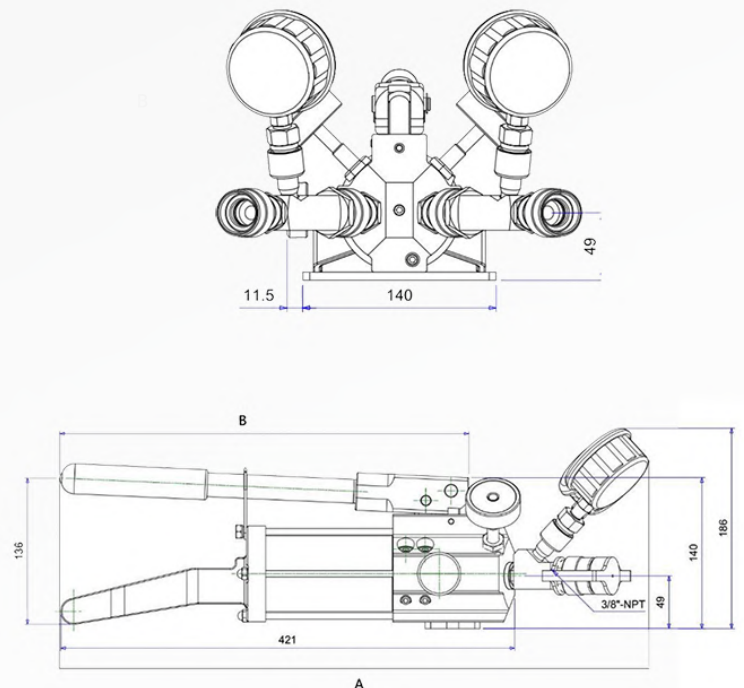
## Weights & Dimensions

	BP350B	BP550B	BP1000B	BP350BG
Overall Length (A)	421 mm	541 mm	741 mm	539 mm
Handle Length (B)	379 mm	485 mm	590 mm	380 mm
Pump Weight	4.3 kg	5.3 kg	7.8 kg	5.0 kg
Gross Kit Weight	4.8 kg	5.6 kg	8.3 kg	11.33 kg

Model: BP350B, BP550B & BP1000B



Model: BP350BG



SCAN ME

